

Front Ensemble Exercises

5-3-2-1

The 5-3-2-1 exercise is presented in five staves. The first staff is in 5/8 time and features a sequence of eighth-note chords: C4-E4-G4, D4-F4-A4, E4-G4-B4, F4-A4-C5, G4-B4-D5, and A4-C5-E5. The second staff continues with chords: B3-D4-F4, C4-E4-G4, D4-F4-A4, E4-G4-B4, F4-A4-C5, and G4-B4-D5. The third staff includes chords: E4-G4-B4, F4-A4-C5, G4-B4-D5, F4-A4-C5, E4-G4-B4, and D4-F4-A4. The fourth staff contains chords: C4-E4-G4, D4-F4-A4, E4-G4-B4, F4-A4-C5, G4-B4-D5, and F4-A4-C5. The fifth staff concludes with chords: E4-G4-B4, D4-F4-A4, C4-E4-G4, and a final whole note C4.

7/8 Octaves

The 7/8 Octaves exercise consists of two staves. The first staff shows a sequence of eighth-note chords: C4-E4-G4, D4-F4-A4, E4-G4-B4, F4-A4-C5, G4-B4-D5, and A4-C5-E5. The second staff continues with chords: B3-D4-F4, C4-E4-G4, D4-F4-A4, E4-G4-B4, F4-A4-C5, and G4-B4-D5.

Green 1

Green 1 is a single staff of music in 4/4 time, featuring a sequence of eighth-note chords: C4-E4-G4, D4-F4-A4, E4-G4-B4, F4-A4-C5, G4-B4-D5, and A4-C5-E5.

Green 2

Green 2 is a single staff of music in 4/4 time, featuring a sequence of eighth-note chords: B3-D4-F4, C4-E4-G4, D4-F4-A4, E4-G4-B4, F4-A4-C5, and G4-B4-D5.

Green 3

Green 3 is a single staff of music in 4/4 time, featuring a sequence of eighth-note chords: E4-G4-B4, F4-A4-C5, G4-B4-D5, F4-A4-C5, E4-G4-B4, and D4-F4-A4.

Keyboard Fluidity

Mallets

B Gregory

4

7



Beginning Four-Mallet Exercises

Double Vertical #1

Two staves of music for Double Vertical #1. The first staff contains a sequence of eighth notes: C4, G4, C5, G4, C5, G4, C5, G4, C5, G4, C5, G4, C5, G4, C5, G4. The second staff contains a sequence of chords: C4-G4, C4-G4, C4-G4, C4-G4, C4-G4, C4-G4, C4-G4, C4-G4, C4-G4, C4-G4, C4-G4, C4-G4, C4-G4, C4-G4, C4-G4.

Double Vertical #2

Two staves of music for Double Vertical #2. The first staff contains a sequence of eighth notes: C4, G4, C5, G4, C5, G4, C5, G4, C5, G4, C5, G4, C5, G4, C5, G4. The second staff contains a sequence of chords: C4-G4, C4-G4, C4-G4, C4-G4, C4-G4, C4-G4, C4-G4, C4-G4, C4-G4, C4-G4, C4-G4, C4-G4, C4-G4, C4-G4, C4-G4.

Double Vertical #3

Two staves of music for Double Vertical #3. The first staff contains a sequence of eighth notes: C4, G4, C5, G4, C5, G4, C5, G4, C5, G4, C5, G4, C5, G4, C5, G4. The second staff contains a sequence of chords: C4-G4, C4-G4, C4-G4, C4-G4, C4-G4, C4-G4, C4-G4, C4-G4, C4-G4, C4-G4, C4-G4, C4-G4, C4-G4, C4-G4, C4-G4.

Single Independent #1

Single staff of music for Single Independent #1. The first measure contains a sequence of eighth notes: C4, G4, C5, G4, C5, G4, C5, G4, C5, G4, C5, G4, C5, G4, C5, G4. The second measure contains a sequence of eighth notes: C4, G4, C5, G4, C5, G4, C5, G4, C5, G4, C5, G4, C5, G4, C5, G4. The third measure contains a sequence of eighth notes: C4, G4, C5, G4, C5, G4, C5, G4, C5, G4, C5, G4, C5, G4, C5, G4. The fourth measure contains a sequence of eighth notes: C4, G4, C5, G4, C5, G4, C5, G4, C5, G4, C5, G4, C5, G4, C5, G4. The numbers 4, 1, 3, and 2 are written below the first four measures respectively.

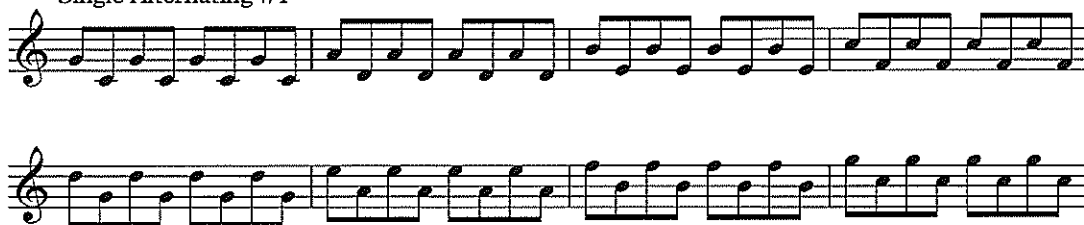
Single Independent #2

Single staff of music for Single Independent #2. The first measure contains a sequence of eighth notes: C4, G4, C5, G4, C5, G4, C5, G4, C5, G4, C5, G4, C5, G4, C5, G4. The second measure contains a sequence of eighth notes: C4, G4, C5, G4, C5, G4, C5, G4, C5, G4, C5, G4, C5, G4, C5, G4. The third measure contains a sequence of eighth notes: C4, G4, C5, G4, C5, G4, C5, G4, C5, G4, C5, G4, C5, G4, C5, G4. The fourth measure contains a sequence of eighth notes: C4, G4, C5, G4, C5, G4, C5, G4, C5, G4, C5, G4, C5, G4, C5, G4. The numbers 4, 1, 3, and 2 are written below the first four measures respectively.

Single Independent #3

Single staff of music for Single Independent #3. The first measure contains a sequence of eighth notes: C4, G4, C5, G4, C5, G4, C5, G4, C5, G4, C5, G4, C5, G4, C5, G4. The second measure contains a sequence of eighth notes: C4, G4, C5, G4, C5, G4, C5, G4, C5, G4, C5, G4, C5, G4, C5, G4. The third measure contains a sequence of eighth notes: C4, G4, C5, G4, C5, G4, C5, G4, C5, G4, C5, G4, C5, G4, C5, G4. The fourth measure contains a sequence of eighth notes: C4, G4, C5, G4, C5, G4, C5, G4, C5, G4, C5, G4, C5, G4, C5, G4. The numbers 4, 1, 3, and 2 are written below the first four measures respectively.

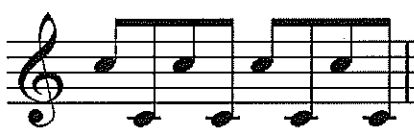
Single Alternating #1



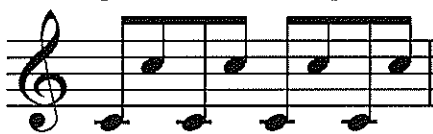
Single Alternating #2



Single Alternating #3



Single Alternating #4



Single Alternating #5



Single Alternating #6



Double Lateral #1



Double Lateral #2



Double Lateral #3



Double Lateral #4



Intermediate Four-Mallet Exercises

Double Vertical #4

Double Vertical #5

Double Vertical #6

Double Vertical #7

Double Vertical #8

Double Vertical #9

Single Independent #4

Single Independent #5

Intervals

right hand
left hand
both hands
in any interval

The exercise consists of two staves of music. The first staff shows a sequence of chords in the right hand, and the second staff shows the same sequence in the left hand. The chords are: C major, D major, E major, F major, G major, A major, B major, C major, D major, E major, F major, G major, A major, B major, C major. The key signature changes from C major to D major, then to E major, and finally to F major.

Block Chords

forwards
backwards

The exercise consists of two staves of music. The first staff shows a sequence of block chords in the right hand, and the second staff shows the same sequence in the left hand. The chords are: C major, D major, E major, F major, G major, A major, B major, C major, D major, E major, F major, G major, A major, B major, C major. The key signature changes from C major to D major, then to E major, and finally to F major.

Block Chord Accents (moeller stroke)

The exercise consists of two staves of music. The first staff shows a sequence of block chords in the right hand, and the second staff shows the same sequence in the left hand. The chords are: C major, D major, E major, F major, G major, A major, B major, C major, D major, E major, F major, G major, A major, B major, C major. The key signature changes from C major to D major, then to E major, and finally to F major. Each chord has a downward-pointing 'v' symbol (moeller stroke) under the notes.

London Bridge

repeat each bar
in any key

The exercise consists of two staves of music. The first staff shows a sequence of block chords in the right hand, and the second staff shows the same sequence in the left hand. The chords are: C major, D major, E major, F major, G major, A major, B major, C major, D major, E major, F major, G major, A major, B major, C major. The key signature changes from C major to D major, then to E major, and finally to F major. Each chord has a downward-pointing 'v' symbol (moeller stroke) under the notes.